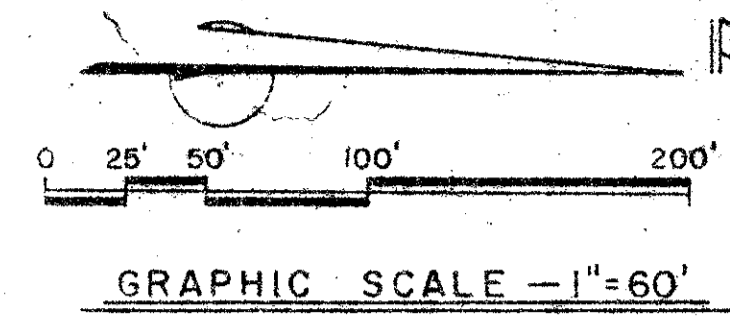


50/86

50/86

# PLAT OF WINCHESTER WOODS SHEET TWO OF TWO

SUBDIVISION OF NW 1/4 OF SECTION 36, TWP. 44 S., RGE. 42 E. (P.B. 3, PG. 10) LOT 13

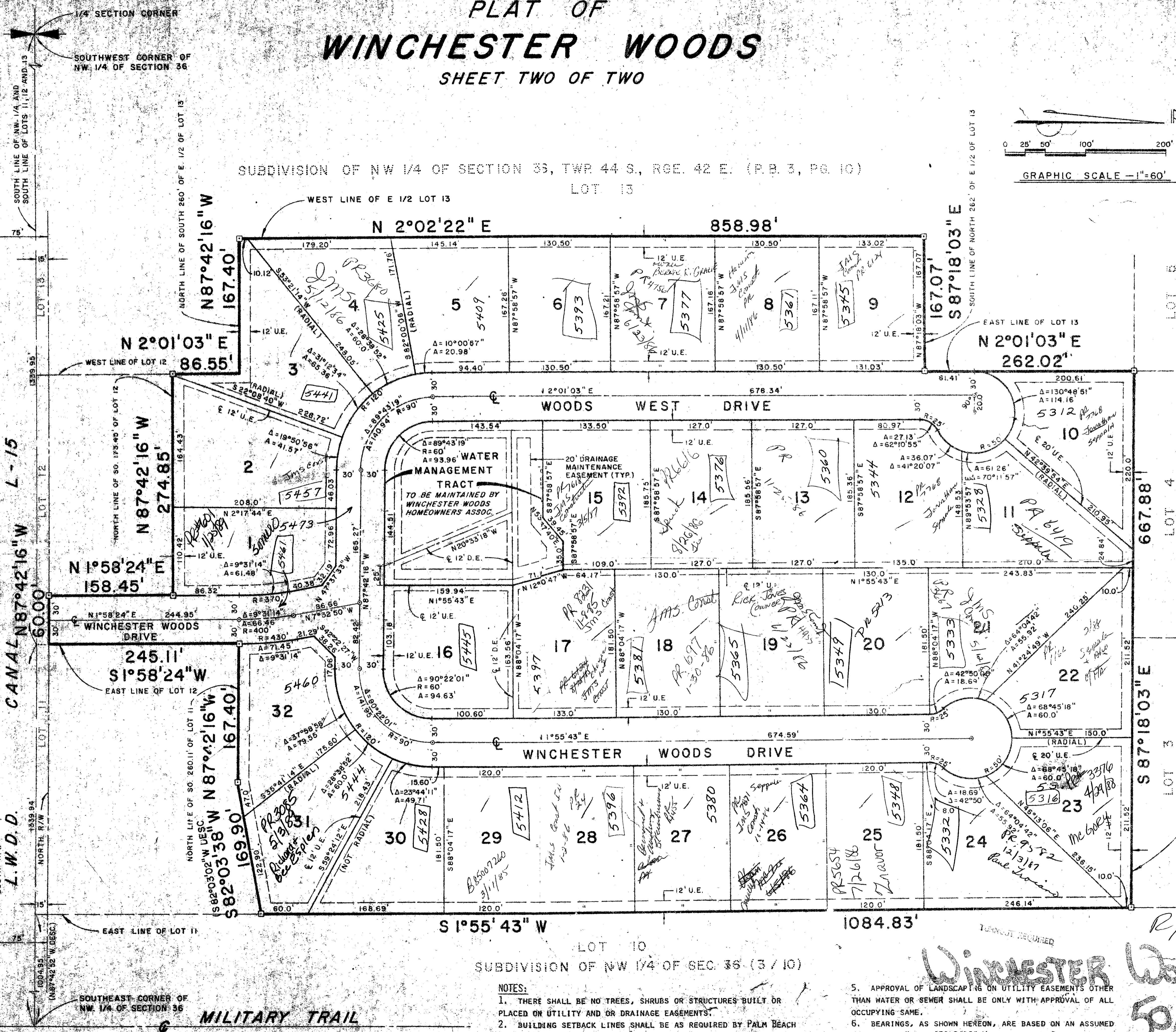


STATE OF FLORIDA  
COUNTY OF PALM BEACH  
This Plat was filed for record at  
M. this day of 19  
and duly recorded in Plat Book No.  
on Page  
John B. Dunkle, Clerk Circuit Court  
By D.C.

DRAWING NUMBER

DRAWING NUMBER

DRAWING NUMBER



- NOTES:
1. THERE SHALL BE NO TREES, SHRUBS OR STRUCTURES BUILT OR PLACED ON UTILITY AND OR DRAINAGE EASEMENTS.
  2. BUILDING SETBACK LINES SHALL BE AS REQUIRED BY PALM BEACH COUNTY ZONING REGULATIONS.
  3. EASEMENTS ARE FOR PUBLIC UTILITIES UNLESS OTHERWISE INDICATED.
  4. PERMANENT REFERENCE MONUMENTS ARE SHOWN THUS: PERMANENT CONTROL POINTS ARE SHOWN THUS:

5. APPROVAL OF LANDSCAPING ON UTILITY EASEMENTS OTHER THAN WATER OR SEWER SHALL BE ONLY WITH APPROVAL OF ALL OCCUPYING SAME.
6. BEARINGS, AS SHOWN HEREON, ARE BASED ON AN ASSUMED BEARING OF NORTH 87°42'16" WEST, FOR THE SOUTH LINE OF LOTS 11, 12 AND 13 OF THE SUBDIVISION OF THE NORTHWEST QUARTER OF SECTION 36, TOWNSHIP 44 SOUTH, RANGE 42 EAST, AS RECORDED IN PLAT BOOK 3, PAGE 10, PUBLIC RECORDS, PALM BEACH COUNTY, FLORIDA.

WINCHESTER WOODS  
BOOK 50 PAGE 86  
FLOOD ZONE 0 FLOOD MAP # 17  
ZONING RT  
ZIP CODE 33462  
PUD NAME N/A

FS 2 16 impact 6  
FS B zone RT  
36/44/42  
36/44/42

**MICHAEL B. SCHORAH & ASSOCIATES, INC.**  
ENGINEERS  
PLANNERS  
DEVELOPMENT CONSULTANTS  
1850 FOREST HILL BLVD.  
SUITE 304  
WEST PALM BEACH,  
FLORIDA 33406  
PHONE: (305) 968-0090

*Winchester Woods*  
**50/86**  
1000-036